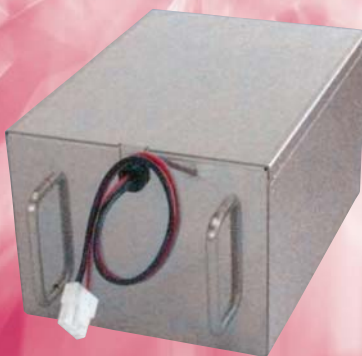


Battery Package BS19A-P48/5.0L

Back up two power supply units at the same time !

Lead Ni-Cd Ni-MH Other



BS19A-P48/5.0L

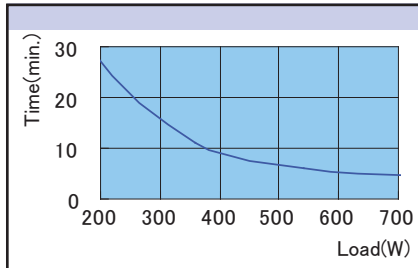
(Note) This model is now under development. The actual product may look different from this image.

Model	Distinction	Stock	Standard price (before Tax)
BS19A-P48/5.0L		Sale on February 2008.	
Model Name Coding BS19A - P 48 / 5.0 L ① ② ③ ④ ⑤			
① Series Name ② Lead Battery ③ Output Voltage (DC48V)		④ Capacity ⑤ Long life battery	

Applicable power supply

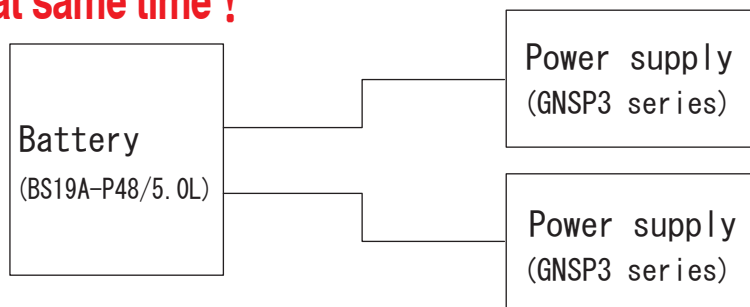
Desktop PC Power Supply	
GNSP3-750-24X05-TRP	C-D12
GNSP3-750-241205-TRP	C-D22
GNSP3-750-242405-TRP	C-D32
GNSP3-750-121205-TRP	C-D32
GNSP3-1000P-12X05-TRP	C-D46

Characteristics of battery discharge※



Features

One battery is able to back up 2 units of GNSP series at same time !



Combination is your choice for GNSP series !

(More details for GNSP series are page on C-D2.)



GNSP3-750-24X05-TRP
(24V output + ATX output)



GNSP3-1000P-12X05-TRP
(12V output + ATX output)



GNSP3-750-Single output
(12V output + 12V output)
or
(24V output + 24V output)



GNSP3-750-241205-TRP
(24V output + 12V output)

※This is reference for early use of battery package and it's not the guaranteed value.

- UPDATE **A.**
- SELECTION GUIDE **B.-A.**
- PRODUCT PAGE GUIDELINE **B.-B.**
- NONSTOP POWER SUPPLY **B.-C.**
- AC+DC DUAL-INPUT PSU **B.-D.**
- GENERAL PURPOSE PC PSU **B.-E.**
- GENERAL PURPOSE REDUNDANT PSU **B.-F.**
- OPTIONS **B.-G.**
- SELECTION GUIDE **C.-A.**
- PRODUCT PAGE GUIDELINE **C.-B.**
- AC-DC SINGLE OUTPUT NONSTOP PSU **C.-C.**
- AC-DC MULTI-OUTPUT NONSTOP PSU **C.-D.**
- AC-DC SINGLE OUTPUT POWER SUPPLY **C.-E.**
- AC-DC MULTI-OUTPUT POWER SUPPLY **C.-F.**
- DC-DC CONVERTER **C.-G.**
- OPTIONS **C.-H.**
- TECHNICAL DICTIONARY **D.**
- COMPANY PROFILE **E.**
- BUSINESS MANUAL **F.**
- INDEX **G.**

Computer Power Supply - BRAIN

Control & Mechanism System Power Supply - LIMBS

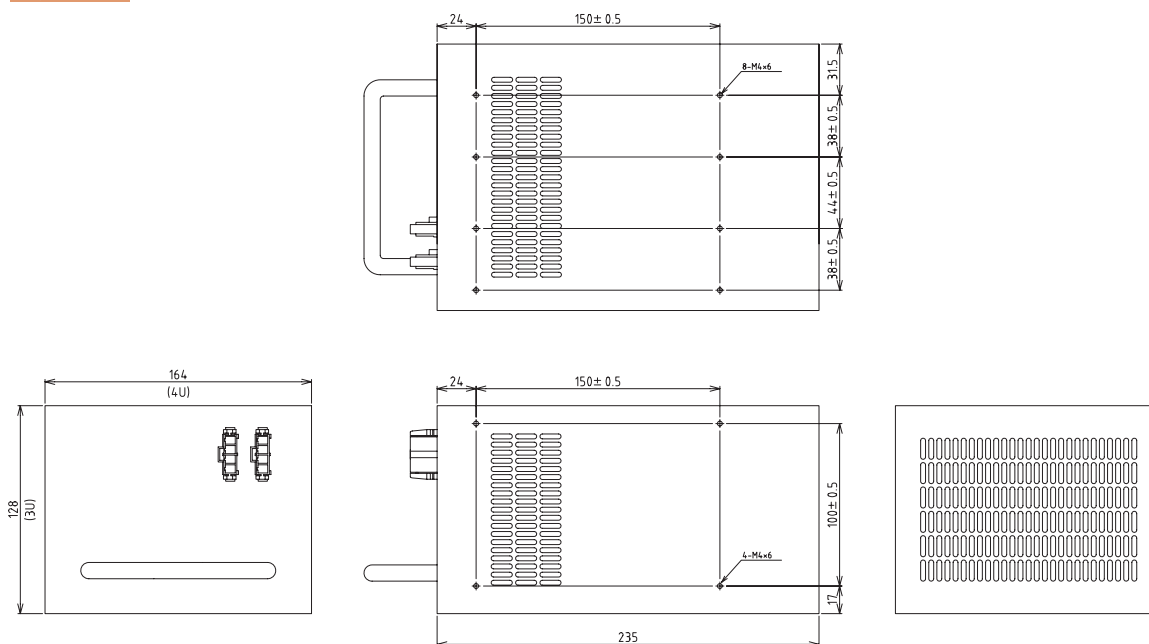
Specification (Specified at normal temperature and humidity unless otherwise specified.)

Items	Specification	Measuring condition
Applied battery	12V × 4 Serial	Sealed lead battery.
Nominal battery voltage	48V	
Rating capacity	5.0Ah	
Built-in fuse rated	60V, 30A	Prohibit to change fuse for different specification and rated.
Operating temperature·humidity	0~40°C/20~90%	No condensation.
Storage temperature·humidity	Under -20°C~40°C /10~95%	
Weight	10kg typical	
Life expectancy*	About 4~6 years (5 times/annually discharge)	Environment temperature 25°C, Power supply output 200W
Free repair period	Free repair for one year from the date of purchase, and only if Nipron are responsible for the defective unit. Except defect caused by over discharge	Except wrong operation, etc. is conducted out of product specification.

*Life expectancy is reference, and it's not guaranteed value.

Outside Drawing

3U/4U Size

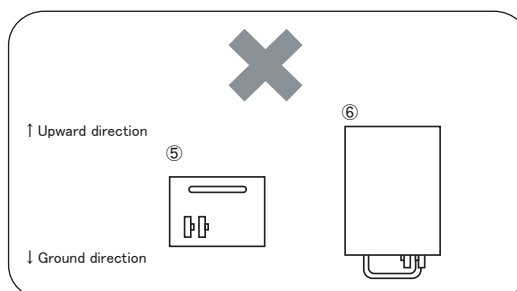
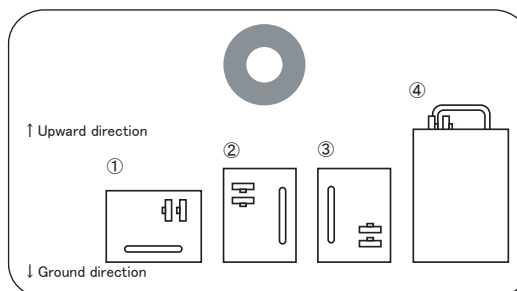
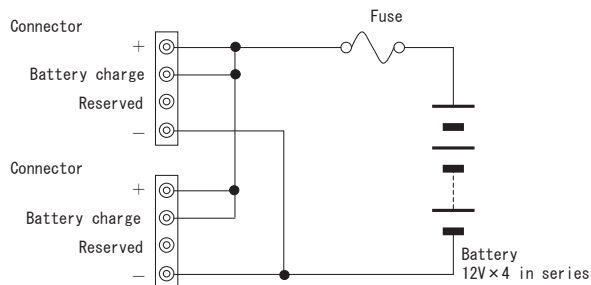


- Attention 1 Dimensional tolerance is ± 1 mm unless indicates otherwise.
 Attention 2 Convex of connector and etc., are exclusive.
 Attention 3 Length of internal PS installation screw is MAX 6mm.

※Battery installation direction

This device use sealed lead acid battery.
 Please observe the following ①~④ for direction of install, because of sealed battery structure,
 Attention
 Please avoid to install ⑤ direction, possibility of chance for liquid leakage when lead battery's safety valve open.
 Please contact us to install ⑥ direction, because it gives strain on handle and connector.

Connection Diagram



UPDATE

A.

SELECTION GUIDE

B.-A.

PRODUCT PAGE GUIDELINE

B.-B.

NONSTOP POWER SUPPLY

B.-C.

AC+DC DUAL-INPUT PSU

B.-D.

GENERAL PURPOSE PC PSU

B.-E.

GENERAL PURPOSE REDUNDANT PSU

B.-F.

OPTIONS

B.-G.

SELECTION GUIDE

C.-A.

PRODUCT PAGE GUIDELINE

C.-B.

AC-DC SINGLE OUTPUT NONSTOP PSU

C.-C.

AC-DC MULTI-OUTPUT NONSTOP PSU

C.-D.

AC-DC SINGLE OUTPUT POWER SUPPLY

C.-E.

AC-DC MULTI-OUTPUT POWER SUPPLY

C.-F.

DC-DC CONVERTER

C.-G.

OPTIONS

C.-H.

TECHNICAL DICTIONARY

D.

COMPANY PROFILE

E.

BUSINESS MANUAL

F.

INDEX

G.