

# Product Specification

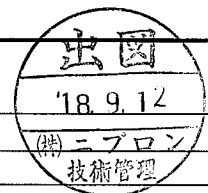
Model:	Date: September 11, 2018
<b>BS11A-P24/2.3L</b>	Created by: Engineering & Development Dept

This specification applies to Battery Package, Model BS11A-P24/2.3L  
 This unit is Battery Package to back up optional DC stabilized Power Supplies at blackout.

## General Specification

(All items are provided at normal temperature and humidity unless otherwise specified).

	Items	Specification and Standard	Measurement condition, etc.
Electrical Specification	Battery	PXL12023 (GS make) 2 pcs in parallel	Sealed Lead-Acid battery
	Nominal Battery Voltage	24V	
	Rated capacity	2.3Ah	20 hour rate
	Capacity at shipment	90% or more of rated capacity	
	Built-in Fuse rating	30A 32V	Use the same specification and Rating of fuse.
Environment	Operating Temp. & Humidity	0 to 40°C, 20 to 90%RH	No condensation
	Storage Temp. & Humidity	-20 to 50°C, 10 to 95%RH	No condensation
	Vibration	To endure 0.075mm of displacement amplitude with 10 to 55Hz of Frequency in each direction of X, Y, and Z for 10 sweep cycles.	To follow JIS-C-60068-2-6 (at the condition of standard packaging)
	Drop Test	Lift one bottom edge of the unit up to 50mm high with the opposite edge placed on the test bench, and let it fall. Repeat 3 times for each of four bottom edges, and no malfunction shall be observed.	To follow JIS-C-60068-2-31 (at the condition of standard packaging)
Others	Insulation Resistance	100MΩ or more between + terminal and FG, and between - terminal and FG.	At DC500V Megger
	Dimension	Refer to Outline drawing.	
	Weight	2.6kg typical	
	Quality Grade	FA	To follow our standard.
	Short lifetime component	Battery	Periodical maintenance and replacement is required.
	Storage condition	Auxiliary charging shall be every 3 months at 35°C of storage temperature and every 6 months at 25°C of storage temperature. (If auxiliary charging is not conducted beyond the period, the battery may not recover enough, or perform the expected lifetime after the charging).	
	Warranty	One year after delivery. However, if any faults belong to us, the defective unit shall be repaired or replaced at our cost except the defect caused by over discharge.	Except wrong operation out of the specification.
	Documents	Any technical-related documents except the specification including General specification and Outline drawing are not submitted in principle.	



REV	Date	Description	By	REV	Date	Description	By

Drawn by	Checked by	Approved by	Document No.	
Yodo			2799-01-4-520	1/3

Nipron Co., Ltd.

Due to the technical improvement, the specifications and functions are subject to change without notice.

# Product Specification

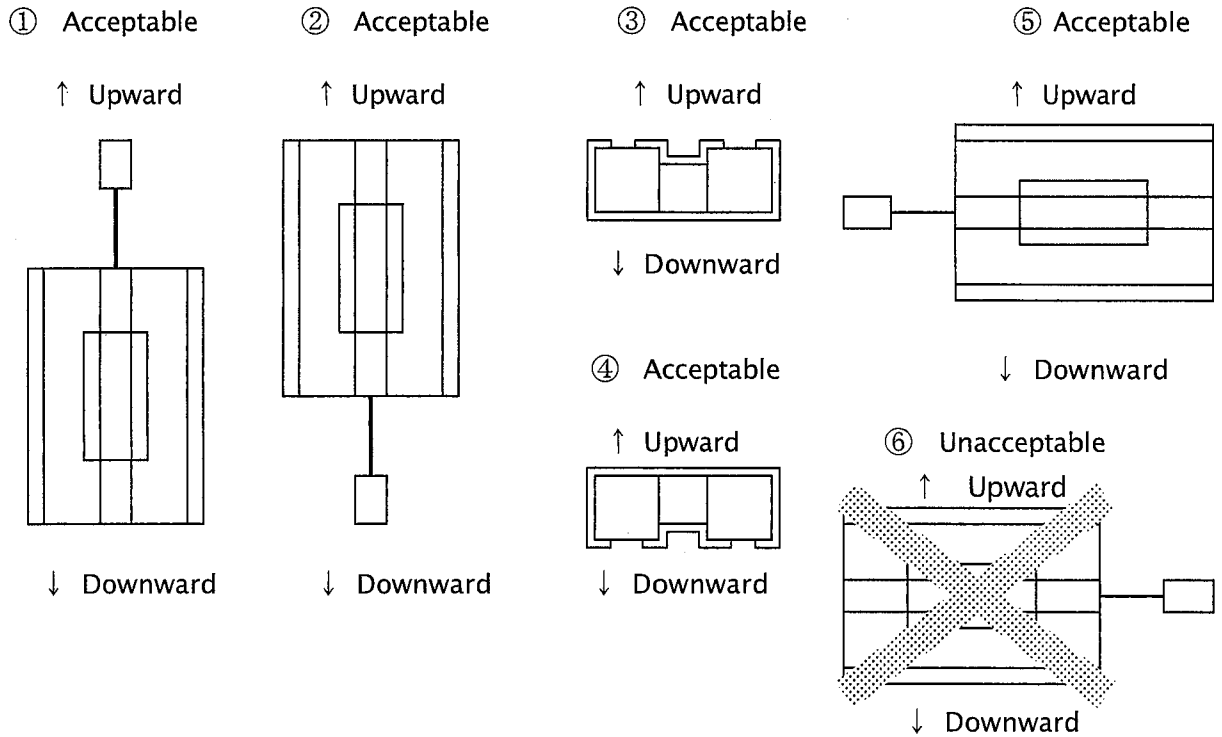
Model: <b>BS11A-P24/2.3L</b>	Date: September 11, 2018 Created by: Engineering & Development Dept
---------------------------------	---

## Installation

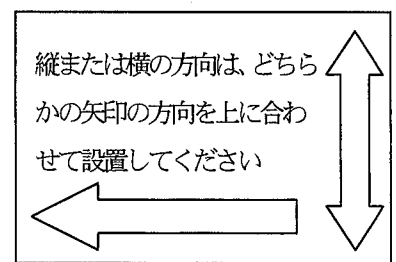
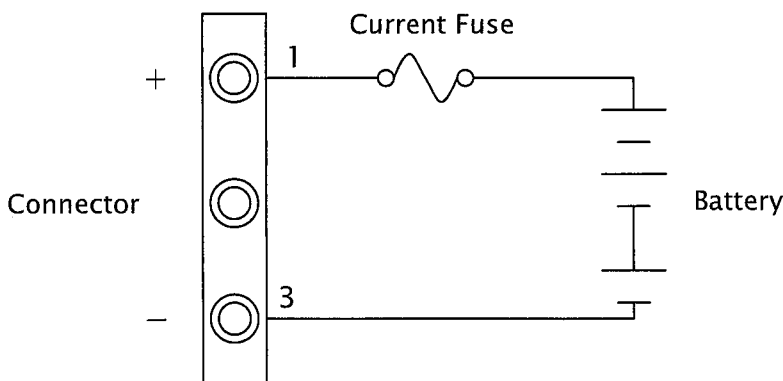
Sealed Lead-Acid battery is used in the unit.

Make sure to follow the direction of ① to ⑤ in installation due to the structure of the battery.

\*Note: Do not install the unit in the direction ⑥, as it may cause the leakage of the electrolyte when the safety valve of the Lead-Acid battery is opened.  
Refer to the arrow shown in the direction label ⑦ to install correctly.



## Wiring



⑦ Direction Label

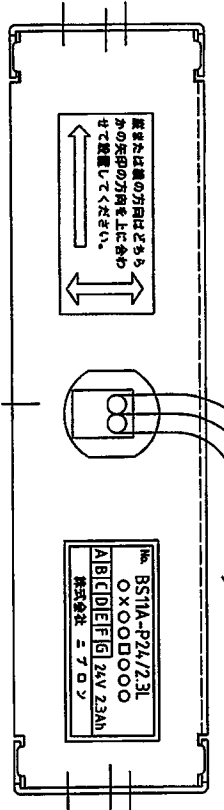
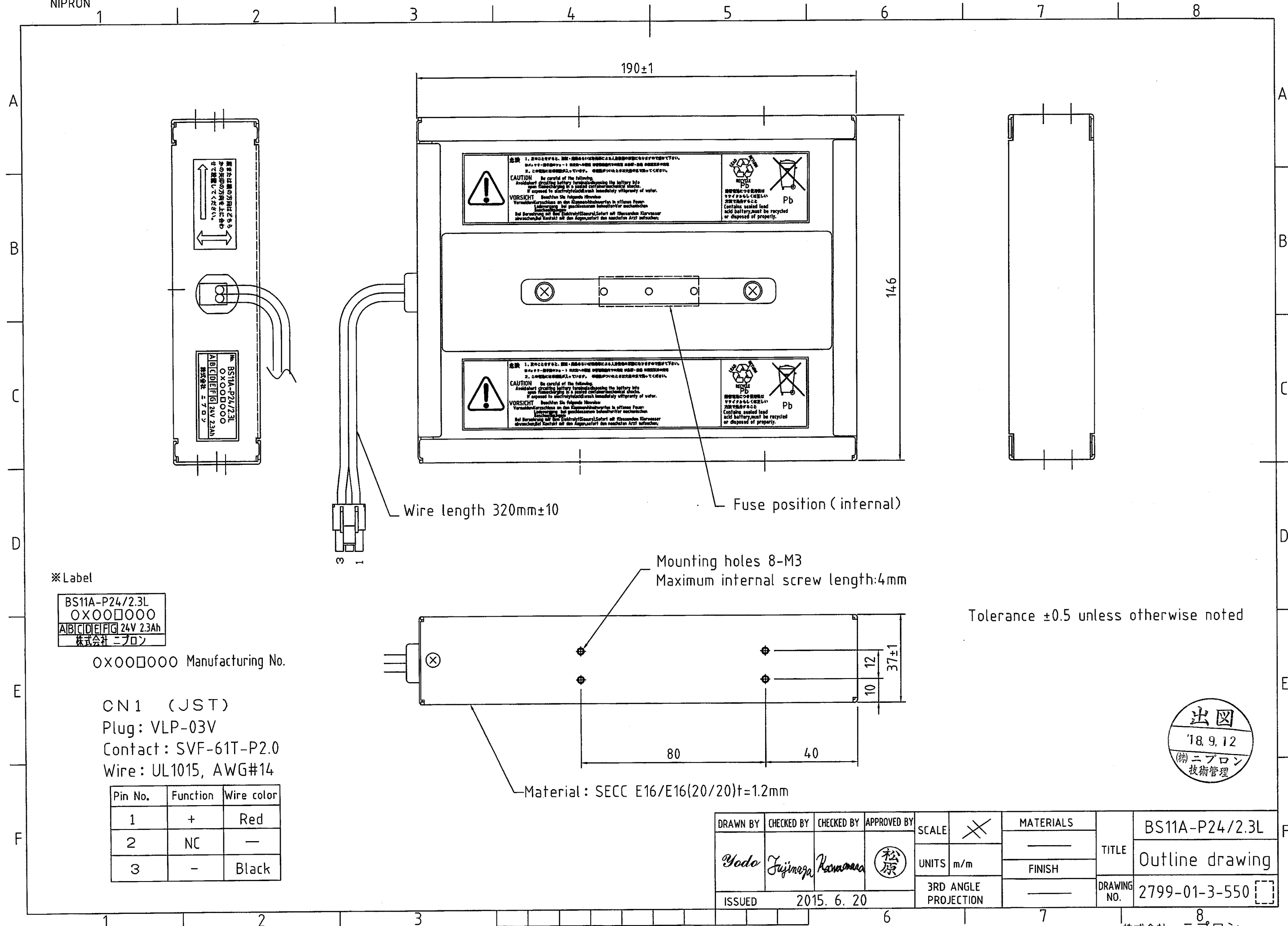


REV	Date	Description	By	REV	Date	Description	By
Drawn by	Checked by	Approved by	Document No.				
Yodo	(川)	(松原)	2799-01-4-520				2/3

Nipron Co., Ltd.

Due to the technical improvement, the specifications and functions are subject to change without notice.





※Label

BS11A-P24/2.3L  
OXOO□OOO  
ABCDEFGHIJ 24V 2.3Ah  
株式会社 ニプロン

OXOO□OOO Manufacturing No.

CN1 (JST)  
Plug: VLP-03V  
Contact: SVF-61T-P2.0  
Wire: UL1015, AWG#14

Pin No.	Function	Wire color
1	+	Red
2	NC	—
3	-	Black



DRAWN BY	CHECKED BY	CHECKED BY	APPROVED BY	SCALE	MATERIALS	TITLE	DRAWING NO.
Yodo	Fujimaga	Kanama	松原	1/1			
ISSUED				2015. 6. 20	3RD ANGLE PROJECTION	FINISH	