

Product Specifications

Model No. BS05A-P24/2.2L (PS2698L)	01	Prepared on October 14,2003	Section HF Engineering
---------------------------------------	----	-----------------------------	---------------------------

The specifications are for Battery pack BS05A-P24/2.2L (PS2698L).
The battery pack is used for DC power supply back up at AC black out.

General specifications (As specified at normal temperature and humidity, unless otherwise noted)

	Item	Specifications	Measuring conditions, etc.
Electrical specifications	Battery	PXL12023 (Manufactured by GS) Two series are connected.	Sealed lead acid battery
	Nominal voltage	24V	
	Rated capacity	2.3Ah	20-hour rate
	Capacity at shipment	90% or more of rated capacity.	
	Fuse	20A/32V	Use the same one for replacement.
Environmental specifications	Operating temperature and humidity	0 - 40°C / 20 - 90%RH	No condensation
	Storage temperature and humidity	- 20 - 50°C / 10 - 95%RH	No condensation
	Vibration	At amplitude 0.15mm, frequency 10 - 55Hz, sweep time 3 minutes, to be endurable for 30 minutes to the each direction of X, Y, and Z.	Comply with JIS C 0911 (Under packing)
	Shock	At acceleration 98m/s ² , shock-affecting time 20ms, shock is given one time to the each direction of X, Y, and Z. No damage required.	Comply with JIS C 0912 (Under packing)
Others	Insulation resistance	Between + terminal and F.G / - terminal and F.G 100MΩ or more	DC500V
	Size	See mechanical outline drawing	
	Mass	2.6kg typ	
	Product reliability grade	HOA	
	Short life parts	Battery	A regular maintenance, exchange is necessary.
	Storage conditions	Recharge should be made once every 3-months at 35 °C and every 6-months at 25 °C ambient temperature. If it won't be made, even recharge is tried; the battery might not come back the original condition and get the original life.	
	Warranty period	Warranty period is 1 year, if a failure occurs within one year, it will be repaired or replaced without any charge, except over discharge by a customer.	Exception: Miss use by a customer.



Mark	Date	Contents	Charge	Mark	Date	Contents	Charge
------	------	----------	--------	------	------	----------	--------

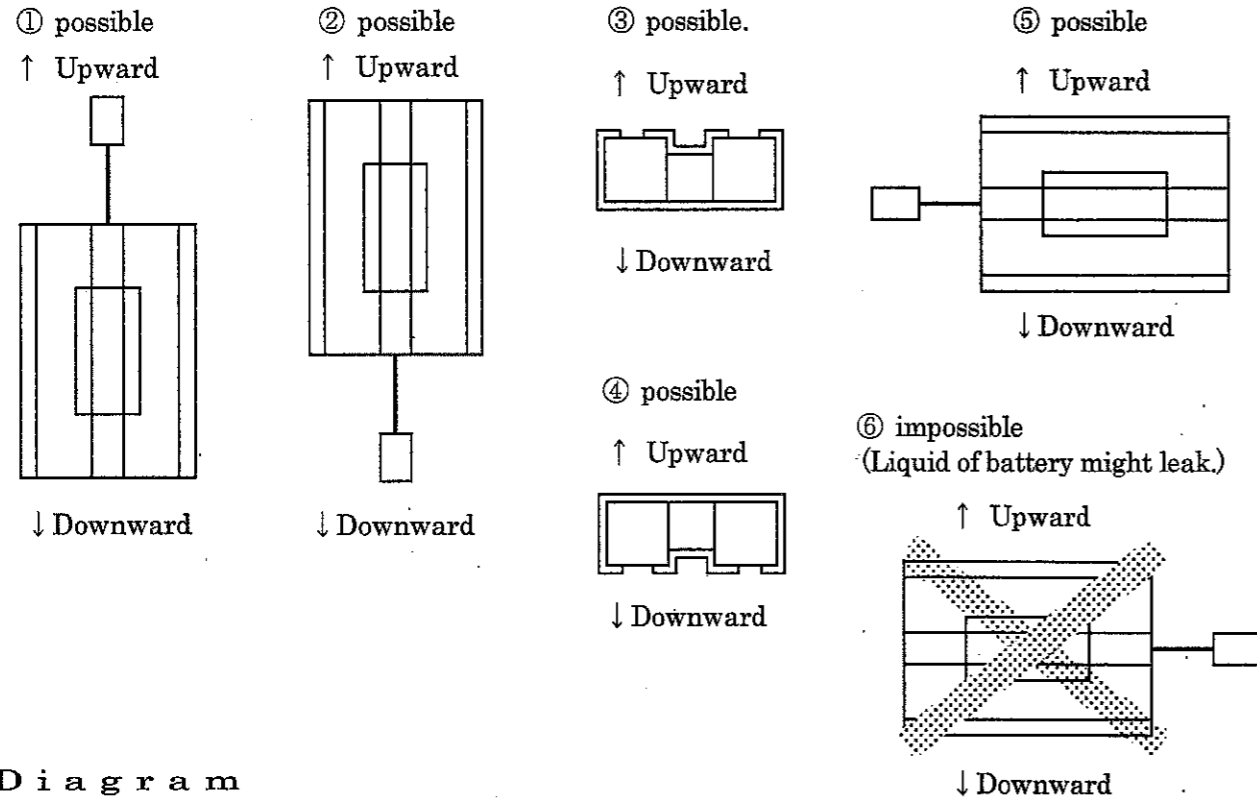
Drawn by Imanishi	Checked by Matsushita	Approved by Nakano	Drawing No. 2698-01-4-522	1/3
----------------------	--------------------------	-----------------------	------------------------------	-----

Product Specifications

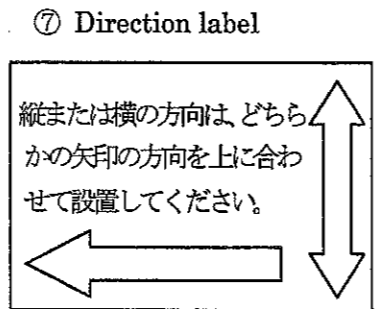
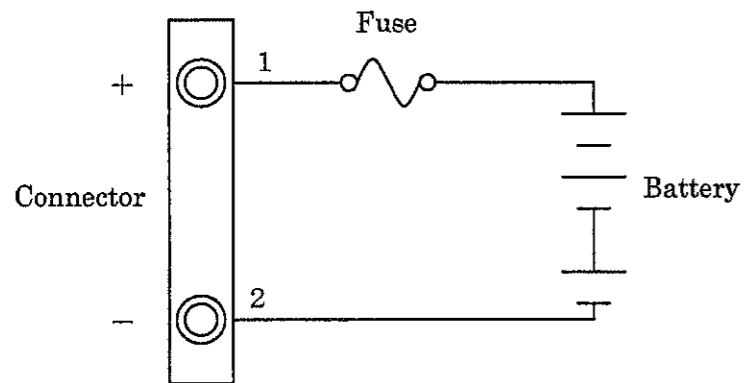
Model No. BS05A-P24/2.2L (PS2698L)	01	Prepared on October 14, 2003
		Section HF Engineering

Installation instruction

This battery pack consists of the sealed lead acid battery. Please make sure to follow the installation direction shown as follows.



Diagram



Follow arrow mark to upward.







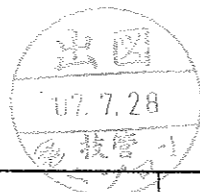
Mark	Date	Contents	Charge	Mark	Date	Contents	Charge
Drawn by	Checked by	Approved by	Drawing No.				
Imanishi	Matsushita	Nakano	2698-01-4-522				2/3

Product Specifications

Model No. BS05A-P24/2.2L (PS2698L)	01	Prepared on October 14,2003	Section HF Engineering
---------------------------------------	----	-----------------------------	------------------------

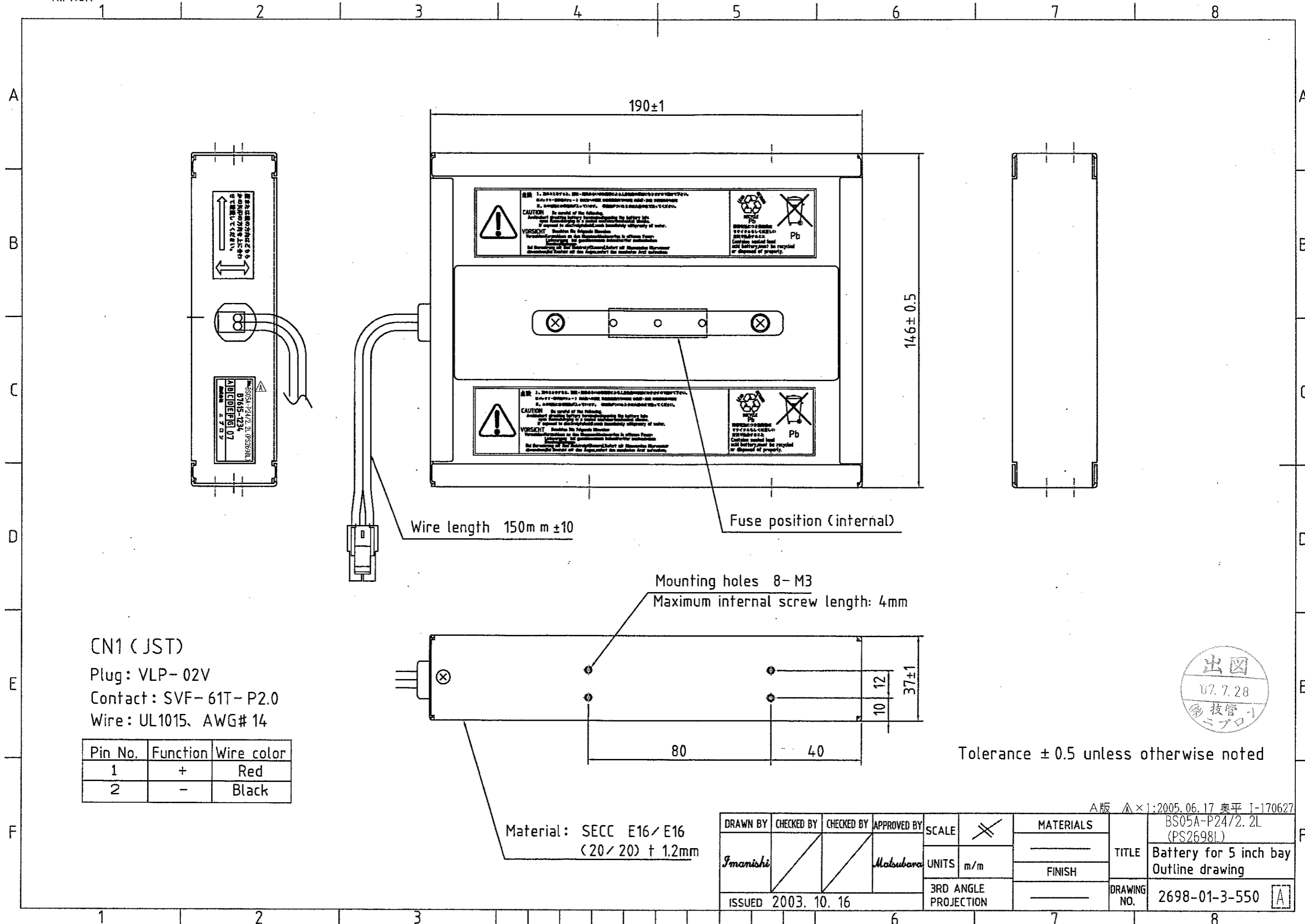
Note on use

1. Installation  Danger
Please do not install sealing space or near the fire. There is a possibility of becoming explosion and the cause of a fire.
2. Liquid leak of a sealed lead acid battery  Warning
When a battery is in use at high temperature or it is almost the end of life, the use might cause a leakage of electrolysis liquid. Since there is a possibility of doing a bad influence to the circumference and resulting fire in the worst case, it should be used within the temperature limits given in specifications. Please use it and carry out periodical maintenance check and exchange. In addition, for an emergency counter measurement against an electrolysis liquid outflow, please put the saucer made from an insulator (what does not react chemically with dilute sulfuric acid) underneath the battery pack.
3. Output short circuit  Warning
Short circuit between terminals should be avoided because it will cause a serious accident.
4. Others  Caution
This brochure does not cover all of instructions of a general lead acid battery, so please read how to use of the general lead acid battery, and use the battery under user's responsibility. Note that wrong use of a battery will cause leakage of liquid, heat generation, explosion, and injury.



Mark	Date	Contents	Charge	Mark	Date	Contents	Charge
Drawn by	Checked by	Approved by	Drawing No.				
Imanishi	Matsushita	Nakano	2698-01-4-522				3/3

NIPRON



CN1 (JST)
 Plug: VLP-02V
 Contact: SVF-61T-P2.0
 Wire: UL1015, AWG# 14

Pin No.	Function	Wire color
1	+	Red
2	-	Black

Material: SECC E16/E16
 (20/20) ± 1.2mm

DRAWN BY	CHECKED BY	CHECKED BY	APPROVED BY	SCALE	UNITS	MATERIALS	TITLE
<i>Imanishi</i>	/	/	<i>Matsubara</i>	1:1		m/m	
ISSUED 2003. 10. 16				3RD ANGLE PROJECTION		DRAWING NO.	

Tolerance ± 0.5 unless otherwise noted

A版 1:2005.06.17 奥平 I-170627

MATERIALS	BS05A-P24/2. 2L (PS2698L)
FINISH	
DRAWING NO.	2698-01-3-550