

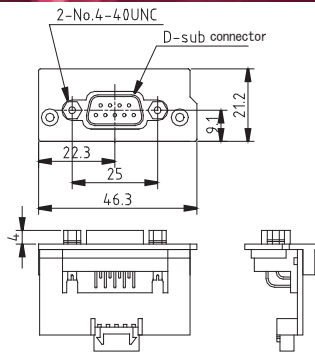
Signal Unit SU-RS

Signal Unit 20-K2



RoHS
Directive

Outline Drawing



Pinout Assignment

PIN No.	FUNCTION	PIN No.	FUNCTION	CONNECTOR TYPE
1	BATT LOW	6	N.C.	JEY-9P-1A3A(JST) or equivalent
2	N.C.	7	N.C.	
3	N.C.	8	AC FAIL	
4	SHUT DOWN	9	N.C.	
5	N.C.			

Model	Stock
SU-RS	Standard stock
Model Name Coding	① Series name
SU - RS	② Dedicated to RS232C
①	②

Features

- By mounting SU-RS, automatic shutdown becomes available with RS232C.

Compatible Power Supply

Desktop PC Power Supply			
Model	Page	Model	Page
eNSP3-450P series	B-C2	eNSP-300P series	B-C22
eNSP4-500P series	B-C12		

Product Specification

	Items	Specification	Measurement condition
Environment	Operating temperature/humidity	0 to 50°C/10 to 90%	No condensation
	Storage temperature/humidity	-25 to 70°C/10 to 95%	No condensation
	Vibration	Displacement amplitude of 0.15mm, vibration frequency of 10-55Hz for 10 sweep cycles in the X·Y·Z directions for 45 minutes each.	JIS-C-0040-1995
Other	Mechanical shock	Acceleration of 150m/s ² for 11ms one time each in the X·Y·Z directions. No malfunction, damage, loosening, or coming-off.	JIS-C-0041-1995
	Reliability grade	FA (Industrial equipment grade to use double-sided PCBs with through holes)	
	Warranty	Three years after delivery. If any faults belong to us, the defective unit shall be repaired or replaced at our cost.	

Signal Input/Output Specification

	Items	Specification	Note
Input signal	Battery shutdown signal for RS232C (SHUT_DOWN_R)	Battery connection is shut off at 'positive (+2.4V min)' input (15ms min input) (only available at battery backup operation)	RS232C connector 4-pin
Output signal	Blackout detection signal for RS232C (AC_FAIL_R)	'Negative (-9V typical)' signal is delivered at low AC input voltage and blackout detection (voltage decrease of AC input capacitor of the power supply body is detected. Detection delay time depends on the size of output power and between 20 to 500ms after AC failure)	RS232C connector 8-pin
	Low battery voltage signal for RS232C (BATT_LOW_R)	'Negative (-9V typical)' is delivered when the battery terminal voltage decreases to 20V typical (when the battery package is not connected to nonstop unit, 'positive (+9V typical)' is delivered)	RS232C connector 1-pin